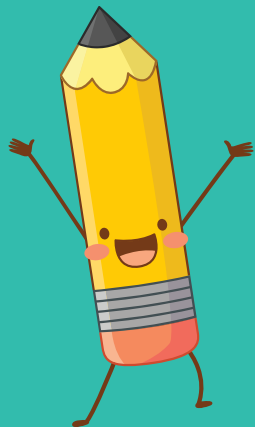


Guide to

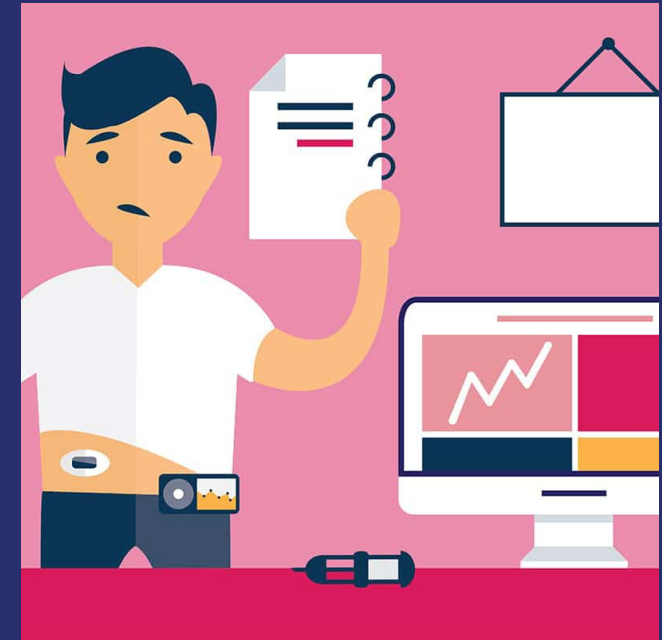
CGM'S & TSLIM x2 Pump

Avel eCare School Health Services



CGM's

- CGM stands for Continuous Glucose Monitor
 - Several brands exist, this covers information on the G6
 - This blood glucose (BG) monitor replaces finger pokes, most of the time
 - Finger pokes may still be used for confirmation in cases of high or low readings
- The CGM system consists of a sensor and transmitter that is attached to the skin and a receiver or smart device that shows and stores the readings



CGM System

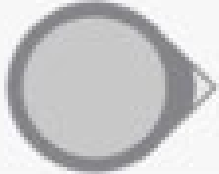
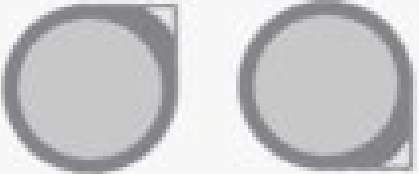

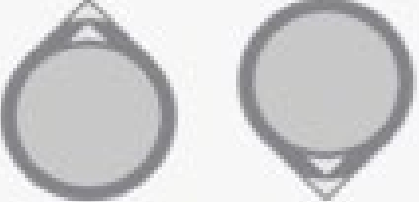
- Readings updated every 5 minutes
- Trend arrows show where BG is heading
- Alarms and alerts for things that need attention such as a high or low BG
- Sensor is good for up to 10 days, transmitter is reusable for 90 days (until battery dies)
 - Sensor attaches to student, transmitter attaches to sensor



Receiver Features



Trend Arrows

	Glucose is steady. Glucose could increase/decrease up to 1.7 mmol/L in 30 minutes
	Glucose could increase/decrease 1.7-3.3 mmol/L in 30 minutes
	Glucose could increase/decrease 3.3-5 mmol/L in 30 minutes
	Glucose could increase/decrease more than 5 mmol/L in 30 minutes

Menu

- Customize Settings
- Calibrate
- End Sensor Session
- ****This is not a tab that will be used or accessed in school, unless by a parent****

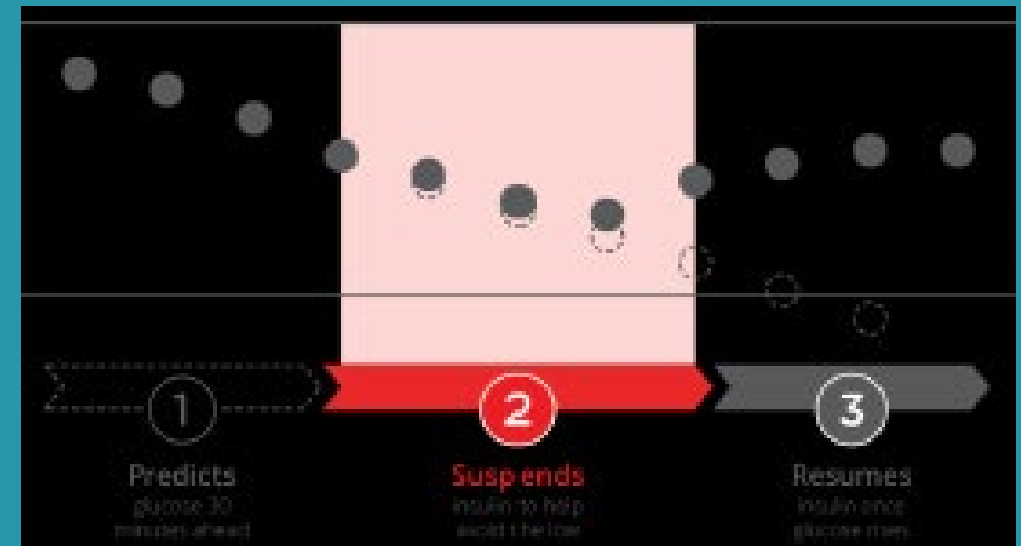
Events

- Enter Carbohydrates
- Enter Insulin
- Stress or Illness
- Exercise

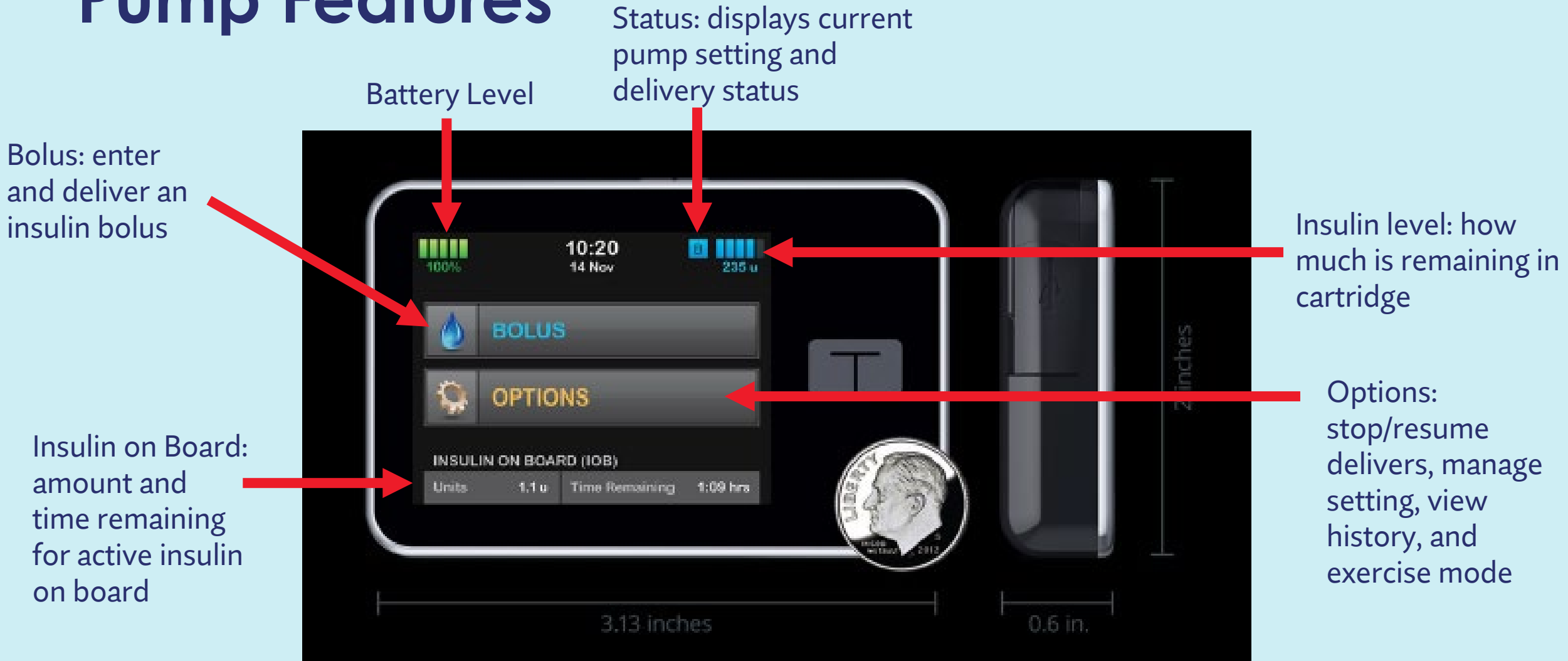
Insulin is not administered from the CGM, this is a monitoring and record keeping tool only.

T-SLIM x2 Insulin Pump

- Control IQ: Closed Loop System adjust insulin delivery to prevent highs and lows, still allowing for bolus delivery for meals and snacks.
- Most commonly used
- Automatic insulin levels based on G6 readings
- Automatic correction boluses to prevent hyperglycemia
- Options for sleep and exercise modes
- Basal IQ: Help predict and reduce low BG events, it operates in the background without constant input.



Pump Features



References

•11/09/2020. DEXCOM G6 USER GUIDE. RETRIEVED FROM:
[HTTPS://WWW.DEXCOM.COM/GUIDES](https://www.dexcom.com/guides)

•11/13/2020. T:SLIM INSULIN PUMP USER GUIDE. RETRIEVED FROM:
[HTTPS://WWW.TANDEMDIABETES.COM/DOCS/DEFAULT-SOURCE/PRODUCT-DOCUMENTS/TSLIM-INSULIN-PUMP/TSLIM-USER-GUIDE-\(4-3-2\).PDF?SFVRSN=DA6E39D7_8](https://www.tandemdiabetes.com/docs/default-source/product-documents/tslim-insulin-pump/tslim-user-guide-(4-3-2).pdf?sfvrsn=da6e39d7_8)