

Leadership Team



Rebecca VandeKieft
Vice President
& General Manager
Emergency



Tyler Price, MD
Medical Director



Susie Dorris
Nurse Manager



Kayla Ourada
Nurse Supervisor



John Gruber
EMS Manager

Clinical Team



Kierstin Aanenson, RN



Joshua Baade, RN



Crystal Berg, RN



Joliz Beskow, RN



Courtney Christensen, RN



Sarah Christophel, RN



Donna Eschenbaum, RN



Kara Fonken, RN

Clinical Team



Katie Good-Opdahl, RN



Robert Hegge, RN



Miranda Hoistad, RN



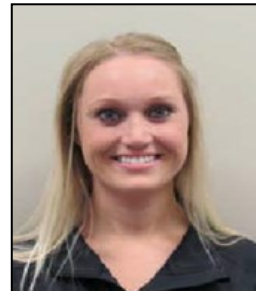
Casie Hunter, RN



Lindsey King, RN



Yaroslav Kolosov, RN



Jamie Larson, RN



Becky Macmanus-Hexum, RN



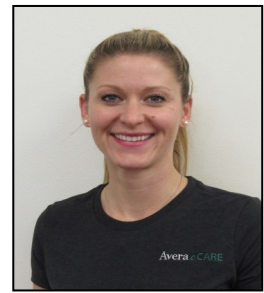
Kate Mahmutovic, RN



Toni Matson, RN



Allison Millar, RN



Megan Nachtigal, RN



Tony Olsen, Paramedic



Josephine Peters, RN



Cindy Pirrung, RN



Jodi Riemersma, RN

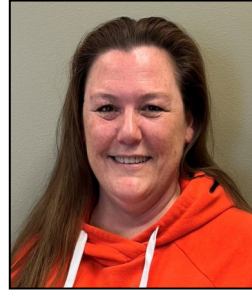
Clinical Team



Amanda Sandager, RN



Hannah Schulte, RN



Angela Scott, RN



Kayla Snoozy, RN



Kiersten Thompson, RN



Rachel Tinker, RN



Leah Van De Berg, RN

Support Team



Julie Block
Support Specialist



Patricia Olson
Support Specialist



Kennedy Scott
Support Specialist



Lisa Woolf
Support Specialist